

Eclipse TPTP Tomcat HowTo

To profile Tomcat applications in Eclipse using TPTP, you can use the following guide.

The description is based on:

Windows XP

Eclipse 3.1.1

MyEclipse 4.1.1 GA (used to start/stop Tomcat)

Tomcat 5.0.x

Java SDK 1.4.2_11

The directory structure we use is:

For Eclipse:

C:\eclipse_3.1

For common components:

C:\eclipse-common\tomcat\Tomcat_5.0.28

C:\eclipse-common\TPTP

C:\eclipse-common\workspace

For extension locations:

C:\eclipse-extensions\emf-sdo-SDK

C:\eclipse-extensions\tptp

1. Get and install required packages

1.1.1 Eclipse Modeling Framework (EMF) SDK

Get it from:

<http://www.eclipse.org/downloads/download.php?file=/tools/emf/downloads/drops/2.1.0/R200507070200/emf-sdo-SDK-2.1.0.zip>

and extract it e.g. in:

C:\eclipse-extensions\emf-sdo-SDK

Place an empty .eclipseextension (note the ".!") file in the

C:\eclipse-extensions\emf-sdo-SDK\eclipse directory.

Generating the .eclipseextension file may not work with the Windows file explorer. In this case copy an already existing one.

Add the extension location:

Help> Software Updates> Manage Configurations

Use [Add an Extension Location] to add the EMF/SDO extension by pointing to the C:\eclipse-extensions\emf-sdo-SDK\eclipse directory.

(Eclipse will restart)

1.1.2 XML Schema Infoset Model (XSD) SDK 2.1

If you don't use MyEclipse, you also need to install the Schema Infoset Model.

Get it from:

<http://www.eclipse.org/downloads/download.php?file=/tools/emf/downloads/drops/2.1.0/R200507070200/xsd-SDK-2.1.0.zip>

You can add it as a separate extension location as described above.

1.2 TPTP Runtime

Get it from (Version "ALL"):

<http://www.eclipse.org/tptp/home/downloads/drops/TPTP-4.1.0.html>

and extract it e.g. in:

C:\eclipse-extensions\tptp

Place an empty .eclipseextension (note the ".!") file in the
C:\eclipse-extensions\tptp\eclipse directory.

Add the extension location:

Help> Software Updates> Manage Configurations

Use [Add an Extension Location] to add the EMF/SDO extension by pointing to the
C:\eclipse-extensions\tptp\eclipse directory.

(Eclipse will restart)

1.3 TPTP Agent Controller

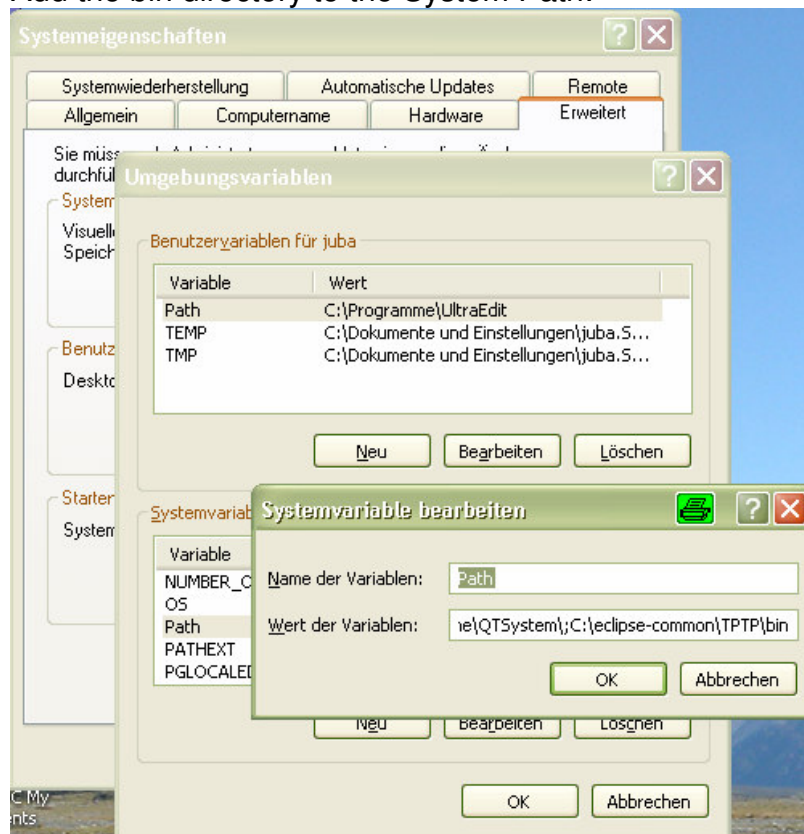
The TPTP Agent Controller is a stand alone, native application.

Get the Agent Controller from:

<http://www.eclipse.org/tptp/home/downloads/drops/TPTP-4.1.0.html#rac>

and extract it e.g. in: C:\eclipse-common\TPTP

Add the bin directory to the System Path:

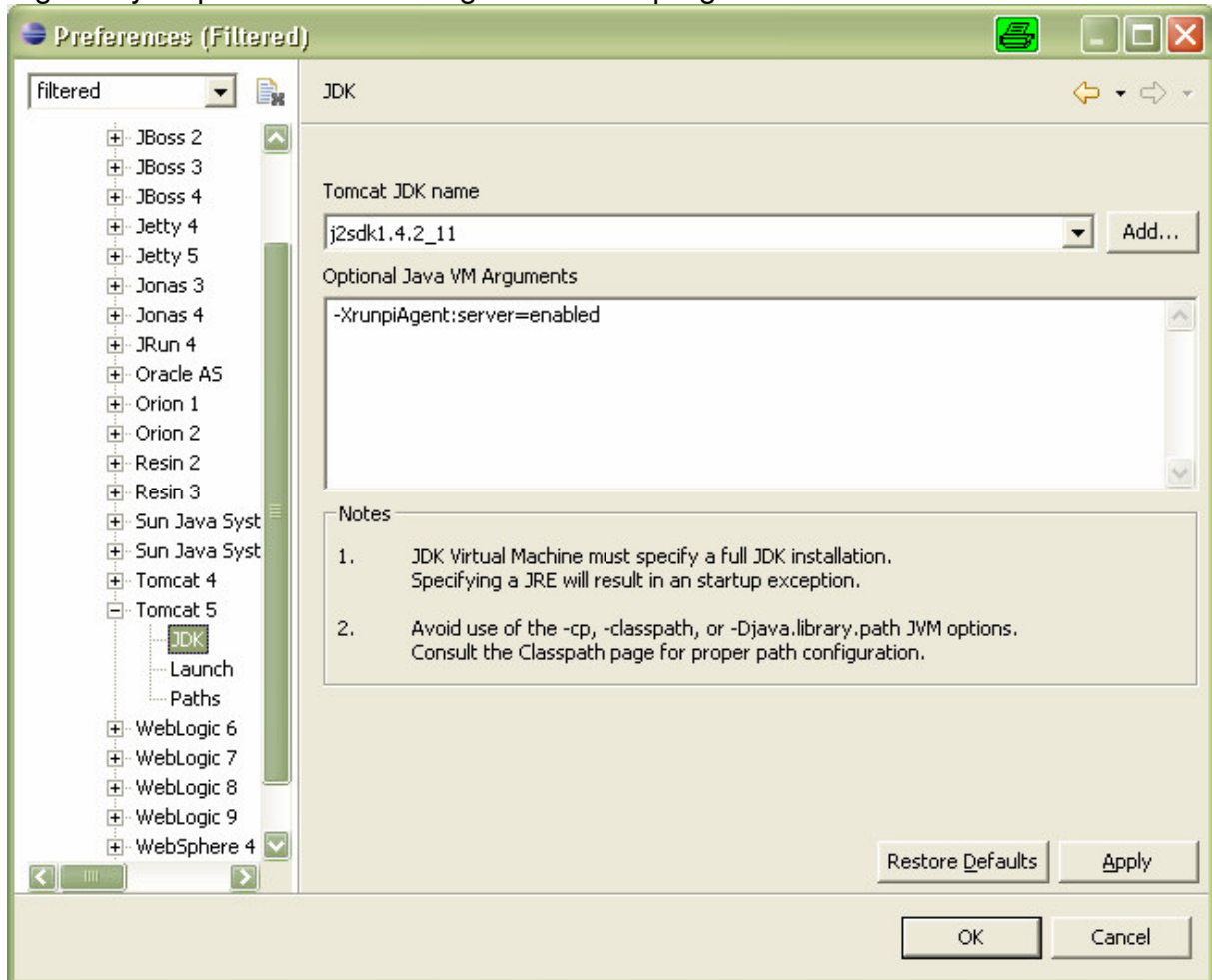


Run C:\eclipse-common\TPTP\bin\SetConfig.bat

Just press [Enter] on every question, at the end, a setup file (C:\eclipse-common\TPTP\config\serviceconfig.xml) will be written.

2. Configure the Tomcat JDK

e.g. in MyEclipse add the VM argument `-XrunpiAgent:server=enabled`



3. Use TPTP

3.1 Start the RAServer.exe


C:\eclipse-common\TPTP\bin\RAServer.exe

3.2 Start the Tomcat Server

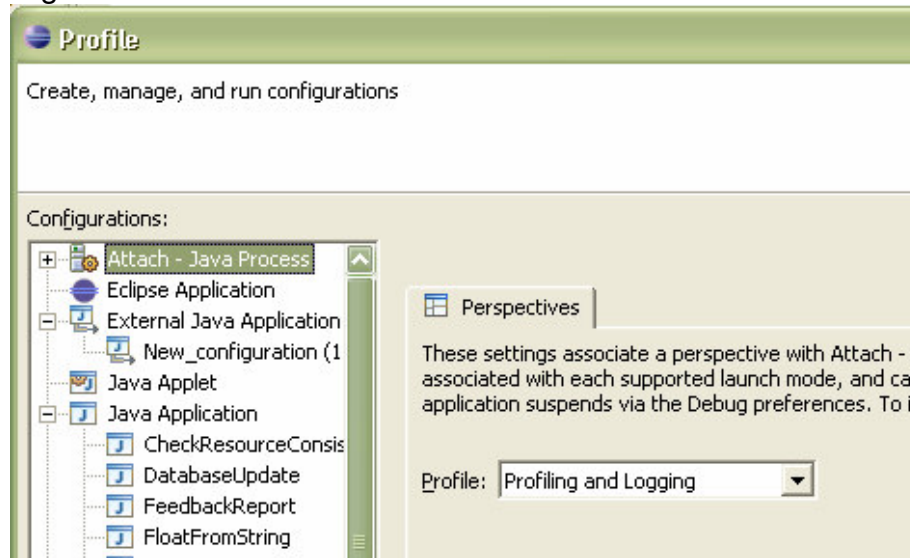
3.3 Setup TPTP and start profiling

Open the TPTP perspective in Eclipse

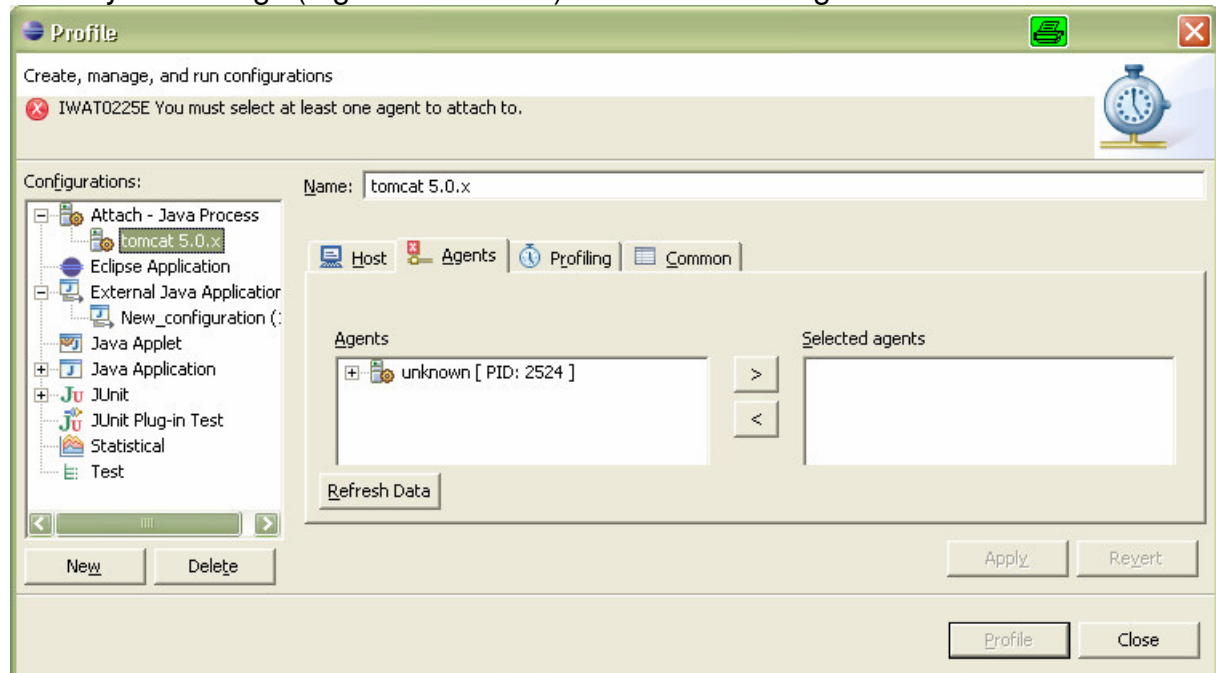
Window> Open Perspective> Other...> Profiling and Logging

Click the arrow of the profile icon  and select Profile...

Right click Attach – Java Process and select New



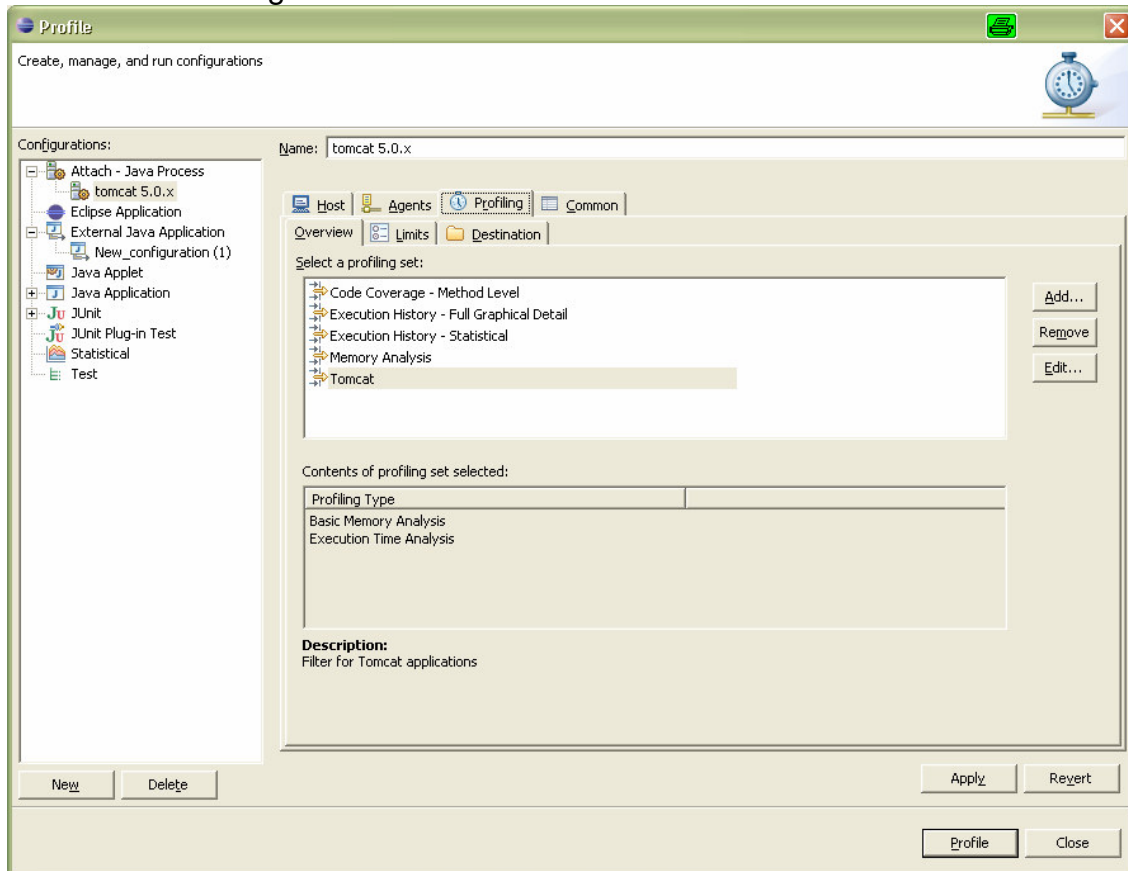
Name your settings (e.g. Tomcat 5.0.x) and select the “Agents” tab:



If you do not find an agent in the “Agents” window, you may have forgotten to start the Tomcat Server after starting RAServer.exe!

Select the agent and add it to the “Selected agents” list.

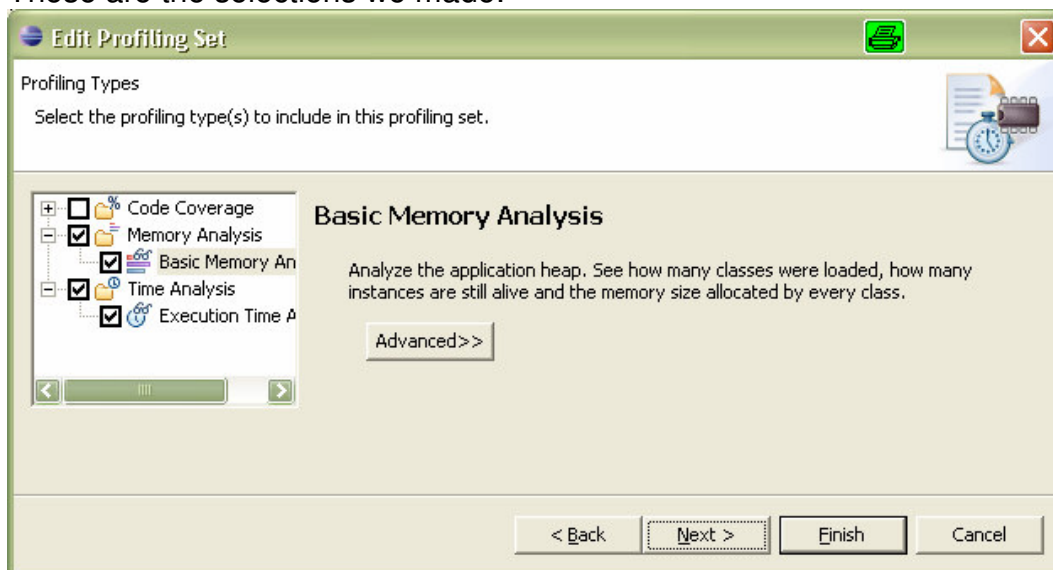
Select the "Profiling" tab:



Here you can add a profiling set via the [Add...] button (we have added the "Tomcat" set):


Name and describe your set, then click [Next >]

These are the selections we made:



[Finish] your settings.

Now [Apply] your settings and click [Profile]

Start Monitoring by selecting the “attached Profiling” and click  :

